



Portable system device/reference for solar field / flat roof / shed.

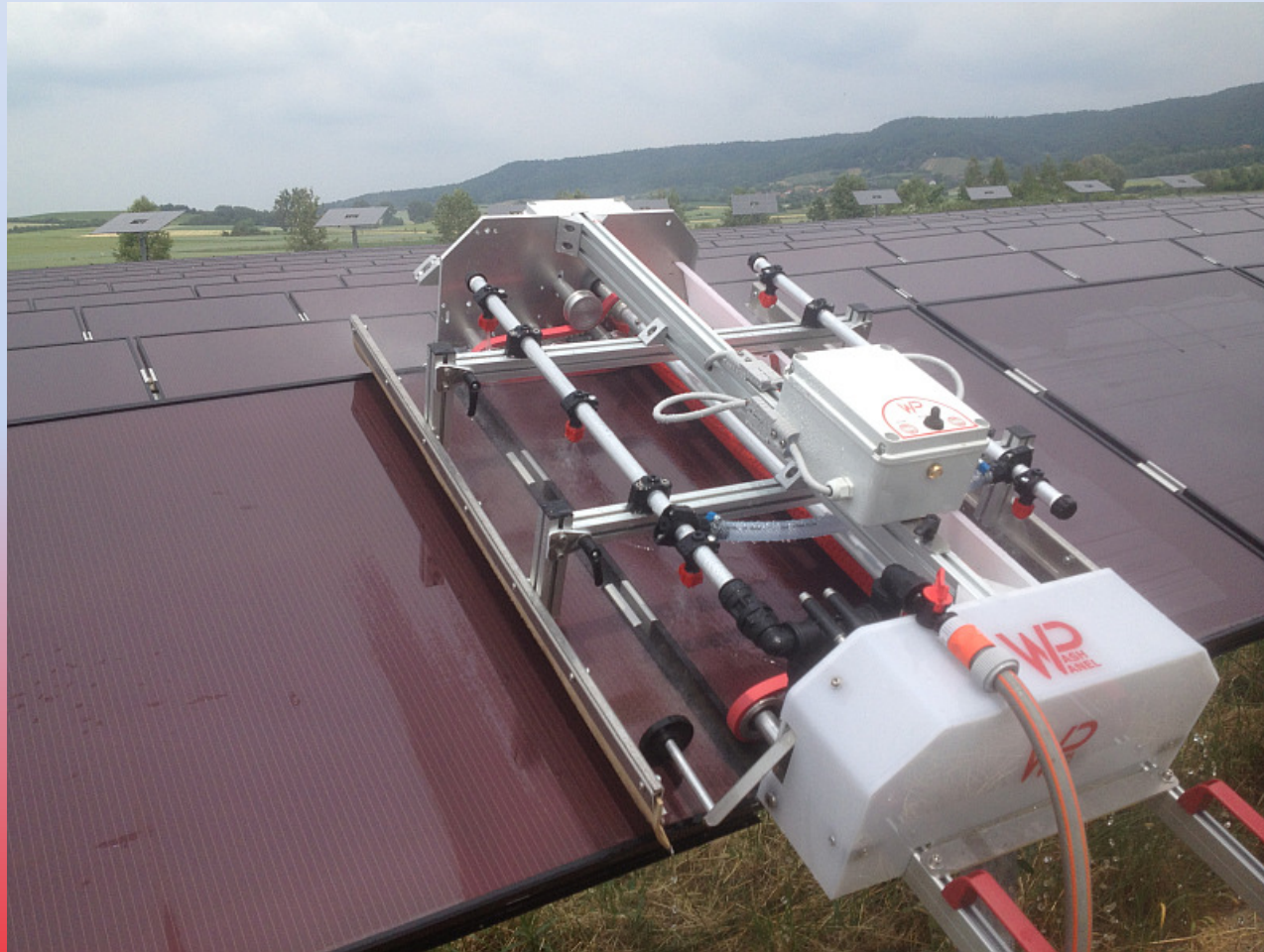


SISTEMA
DI LAVAGGIO
CERTIFICATO



Serie Evo

Evo-100



Solar field 0.75 MW Amorphous



2% Increase efficiency

Location: Germany

2015

GFG-SOLAR GMBH



Serie Evo

Evo-160

Roff shed 0.50 MW Poly



8% Increase efficiency

Location: Italy

2013

Roff shed 0.20 MW Poly



3% Increase efficiency

Location: Belgium

2014

BUILDING
ENERGY.



Serie Evo

Evo-200

Solar field 10 MW Poly

Evo-160

Greenhouse PV 5 MW Poly



Location: Italy (Rome)

2014

5% Increase efficiency



Location: Romania



2015

3% Increase efficiency



Serie Evo

Evo-250 Fs



**Location: Italy
(Parma)**

2013

Solar field 7 MW First Solar

2% Increase efficiency



Serie Evo

Evo-350

Washing capacity: 1344 m²/h



Solar field 1 to 25 MW Poly

7.6% Increase efficiency (never washed)

3% Increase efficiency (1 o 2 washes/year)

Location: Italy (diff. Location)

2013

Ext. Power:



Solar field 1 to 50 MW Poly

3% Increase efficiency

Location: IT/FR/DE/UK /US

2013/4/5





Serie Evo

Evo-400

Washing capacity: 1680 m²/h

Solar field 20 MW Poly



Solar field 2 MW Poly

3% Increase efficiency

Location: IT

2015



3% Increase efficiency

Location: UK

2015





Serie Evo

Plus:

- **TUV Certification**
- **Soil Isolation**
- **Use for single-axis trackers**
- **Lower water consumption**
- **High washing capacity (m²/h)** (2opt. 1Mw/day)
- **Facility of transport**
- **Easy to use**



Serie Evo

Trolley





Serie Spider/Free

Spider/Free-200

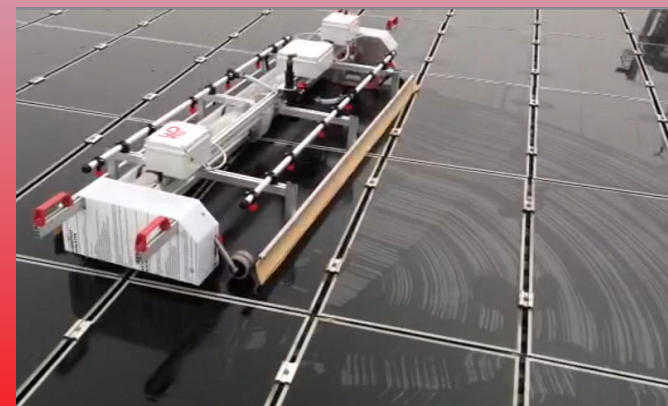
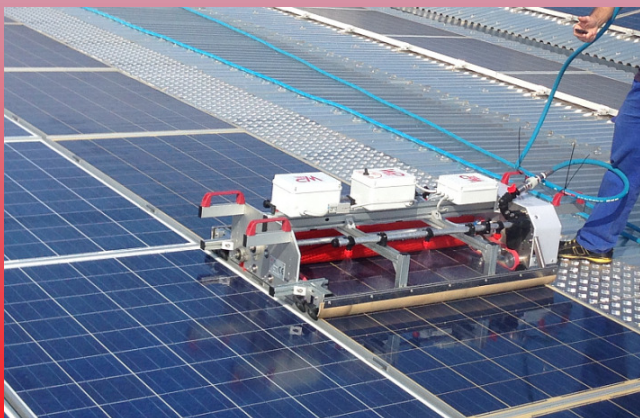


Roof 0.7 MW Poly

3% Increase efficiency

Location: IT

2015





Automatic/portable washing systems for PV Plant



TÜV Italia PS-ENE is accredited / recognised by
National and International Bodies.
For details see <http://www.tuv.it>

TÜV Italia PS-ENE è accreditata / riconosciuta da
Enti Nazionali ed Internazionali.
Dettagli nel sito <http://www.tuv.it>

TEST REPORT RAPPORTO DI PROVA

**Comparison of maximum power and insulation of PV
panel before and after a long series of washing
cycles by using Washpanel machine**

**Confronto della massima potenza e dell'isolamento di
pannello fotovoltaico prima e dopo una serie di cicli di
lavaggio con Washpanel**

Customer (Richiedente):

- Dept./Firm (Ente/Società): Washpanel S.r.l.

Contact us

Washpanel s.r.l.

Vicolo G. Verdi, 67/A
31020 Villorba (TV) - Italy

Tel. +39 0422 618644

Fax. +39 0422 611067

Send us an e-mail to: info@washpanel.com

