



Automatic system to wash PV plants, some references.





Industrial PV Plant

Type: Steelworks

Total Pv plant power:
800 Kw

N° 2 Robots L= 8 mt
N° 2 Robots L=10 mt



Before



Automatic rain system

After WP
18% More

06/2014



Industrial PV Plant

Type: Refinery

Total Pv plant power:
400 Kw

N° 1 Robot L= 11 mt
N° 1 Robot L=12 mt



04/2013

Before

After WP
8% More

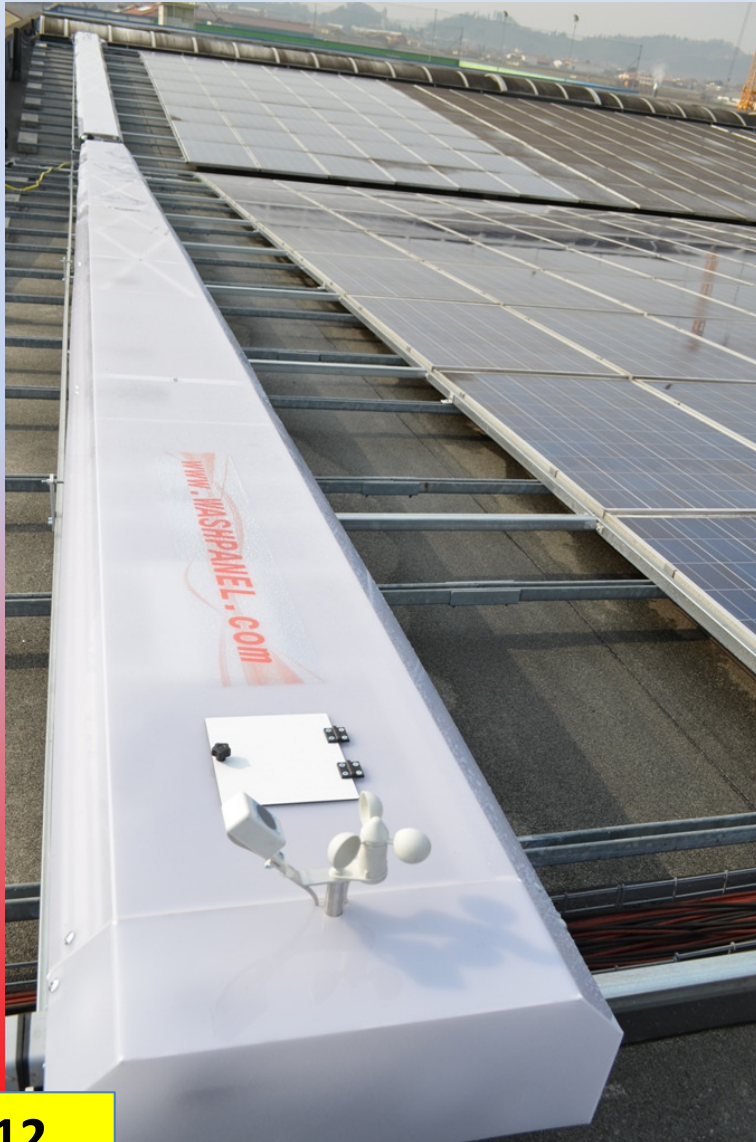


Industrial PV Plant

Type: Typography

Total Pv plant power:
400 Kw

N° 2 Robot L= 13 mt
N° 2 Robot L=12 mt



Before



After 2 years

16% More

11/2012



Industrial PV Plant

Type: Feed factory

Total Pv plant power:
999 Kw

N° 2 Robot L= 11 mt
N° 2 Robot L=12 mt



05/2015

10% More



Industrial PV Plant

Type: Feed factory

Total Pv plant power:
1 Mw

N° 4 Robot L= 10 mt



04/2013

Before



After WP
10% More



Industrial PV Plant

Type: Feed factory

Total Pv plant power:
70 Kw

N° 1 Robot L= 7 mt



Before



After WP
15 % More

03/2014



Agricultural PV Plant

Type: Farm (bovines)

Total Pv plant power:
260 Kw

N° 2 Robot L= 8 mt



After WP
10% More



Before

12/2013



Agricultural PV Plant

Type: Farm (chickens)

Total Pv plant power:
130 Kw

N° 1 Robot L= 8 mt

N° 7 Robots L=8 mt (next year)



After WP
12% More

09/2012

Automatic rain system



Agricultural PV Plant

Type: Farm (pigs)

Total Pv plant power:
200 Kw

N° 2 Robot L= 6.5 mt



After WP
14 % More

12/2013



Agricultural PV Plant

Type: Greenhouses

Total Pv plant power:
500 Kw

N° 1 Robot L= 5 mt



After WP
5% More

05/2014





Automatic washing systems for PV Plant

More than 50 robots



TUV Italia PS-ENE is accredited / recognised by National and International Bodies.
For details see <http://www.tuv.it>

TUV Italia PS-ENE è accreditato / riconosciuto da Enti Nazionali ed Internazionali.
Dettagli nel sito <http://www.tuv.it>

TEST REPORT RAPPORTO DI PROVA

Comparison of maximum power and insulation of PV panel before and after a long series of washing cycles by using Washpanel machine

Confronto della massima potenza e dell'isolamento di pannello fotovoltaico prima e dopo una serie di cicli di lavaggio con Washpanel

Customer (Richiedente):

- Dept./Firm (Ente/Società): Washpanel S.r.l.

Contact us

Washpanel s.r.l.

Vicolo G. Verdi, 67/A
31020 Villorba (TV) - Italy

Tel. +39 0422 618644

Fax. +39 0422 611067

Send us an e-mail to: info@washpanel.com

